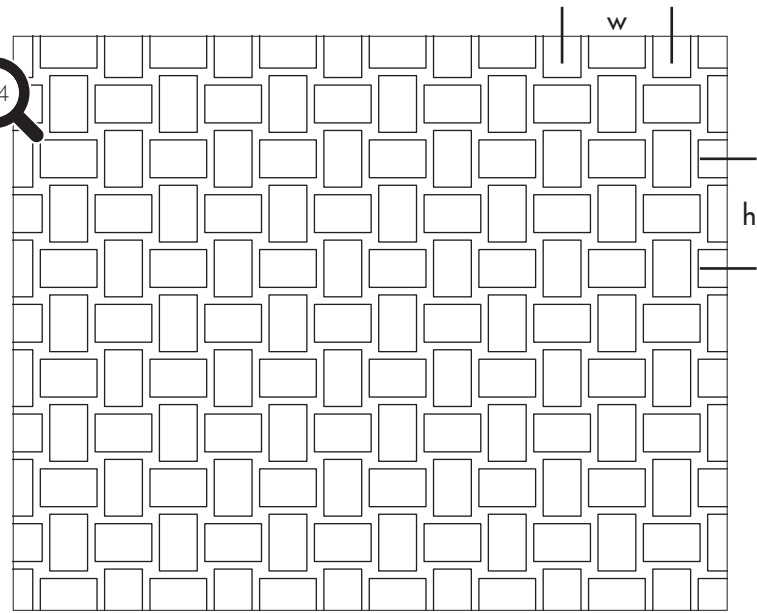
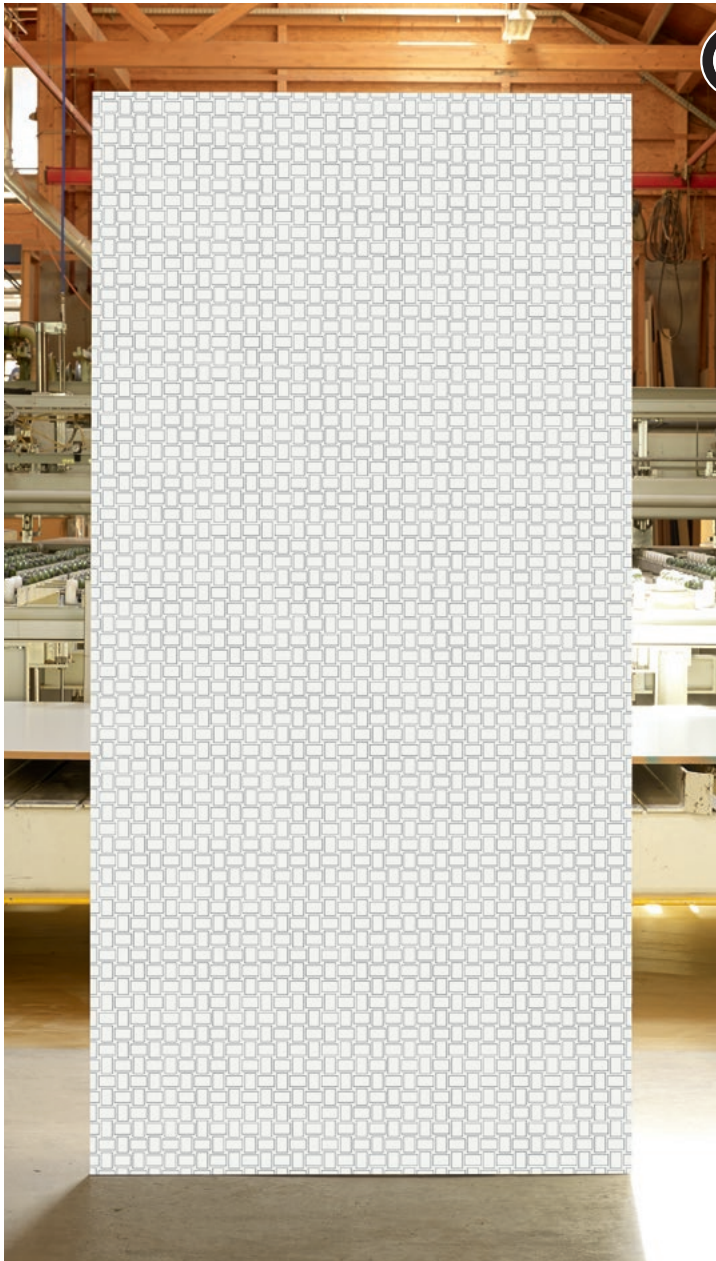


TOP(A)K(U)S(T)I(K)<sup>®</sup> Line 2112

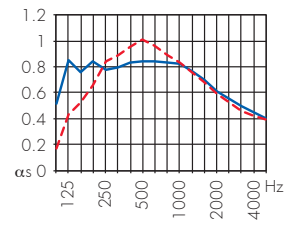


Repeated Pattern w = 58 mm  
h = 58 mm

Sound absorption data acc. to ISO 354  
Suspension height 226 and 66 mm  
with acoustic fleece and Mineral wool 40 mm (60 kg/m<sup>3</sup>)

Line 2112

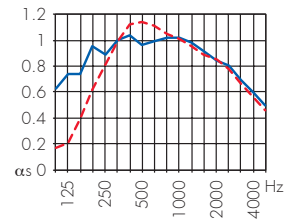
$\alpha_w$	Euro	NRC
0.60 (LM)	C	0.76
0.60 (LM)	C	0.82



2/2/0.5

with additional micro-perforation

$\alpha_w$	Euro	NRC
0.80 (L)	B	0.93
0.75 (LM)	C	0.95



SURFACES

- Wood Veneer**  
all types of wood veneer  
(light veneers must be sampled)
- Paint**  
all except white and very light colours  
(after consultation)
- Melamine**  
our eco-Collection 2.0 (only with MDF)  
HPL coating on request

CORE MATERIAL

- MDF 16 mm standard D-s2,d0 and fire retardant B-s1,d0
- RESAP<sup>®</sup> 16 mm (without melamine)
- 3-layer White Fir 16 mm

FORMATS

- max. 4000 x 1280 mm
- Panel dimensions are dependant on the repeated design in horizontal and vertical direction.

NH AKUSTIK + DESIGN AG  
OBSEESTRASSE 11  
6078 LUNGERN  
CHE-101.964.094 MWST

CONTACT@TOPAKUSTIK.CH  
WWW.TOPAKUSTIK.CH  
T +41 41 679 73 73  
F +41 41 679 73 79



A+ und FSC Produkte sind gekennzeichnet / A+ and FSC products are marked / Produits A+ et FSC sur demande / Prodotti A+ e FSC sono contrassegnati