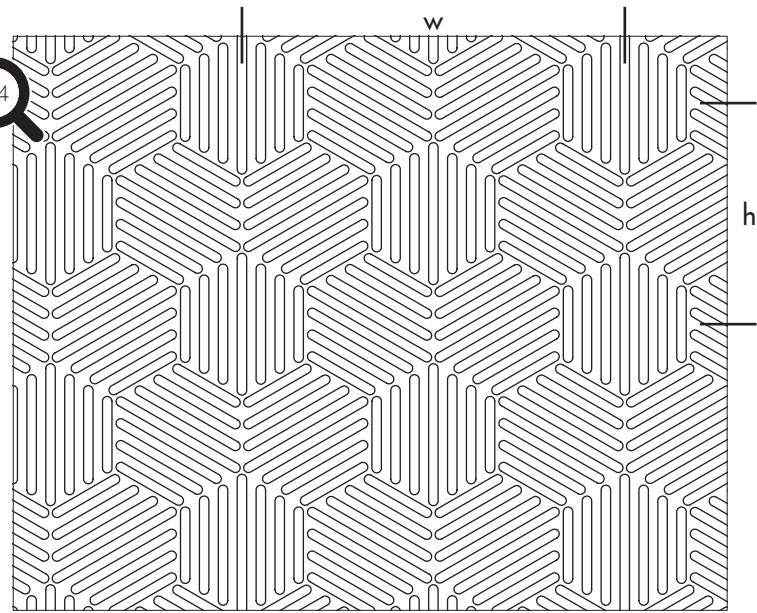
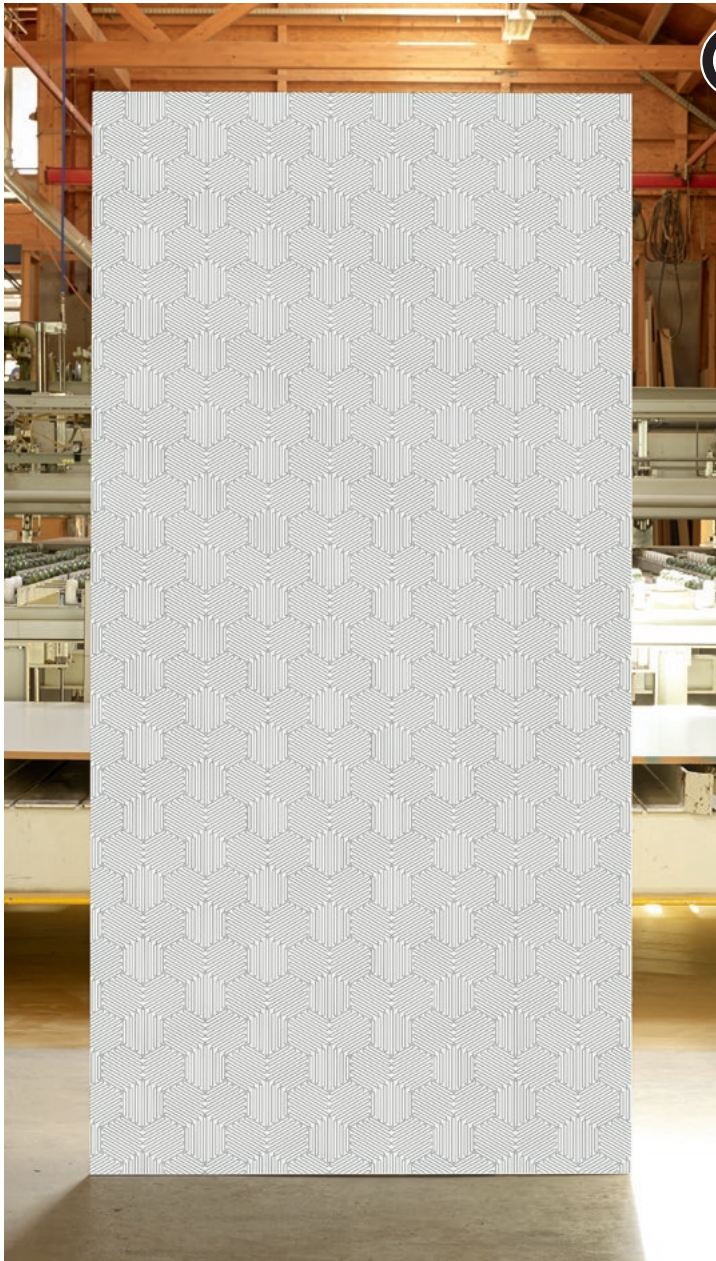


TOP(A)K(U)S(T)I(K)[®] Line 2115

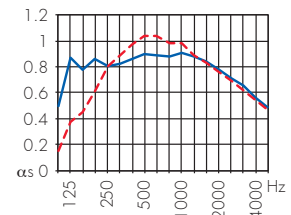


Repeated Pattern $w = 202.50 \text{ mm}$
 $h = 116.913 \text{ mm}$

Sound absorption data acc. to ISO 354
 Suspension height **226** and **66** mm
 with acoustic fleece and Mineral wool 40 mm (60 kg/m³)

Line 2115

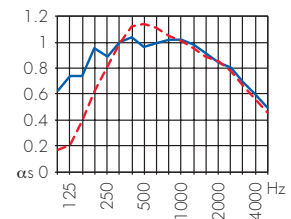
α_w	Euro	NRC
0.75 (L)	C	0.85
0.75 (M)	C	0.90






2/2/0.5

with additional micro-perforation

α_w	Euro	NRC
0.80 (L)	B	0.93
0.75 (LM)	C	0.95



SURFACES

-  **Wood Veneer**
all types of wood veneer
(light veneers must be sampled)
-  **Paint**
all except white and very light colours
(after consultation)
-  **Melamine**
our eco-Collection 2.0 (only with MDF)
HPL coating on request

CORE MATERIAL

- MDF 16 mm standard D-s2,d0 and fire retardant B-s1,d0
- RESAP[®] 16 mm (without melamine)
- 3-layer White Fir 16 mm

FORMATS

- max. 4000 x 1280 mm
- Panel dimensions are dependant on the repeated design in horizontal and vertical direction.

NH AKUSTIK + DESIGN AG
 OBSEESTRASSE 11
 6078 LUNGERN
 CHE-101.964.094 MWST

CONTACT@TOPAKUSTIK.CH
 WWW.TOPAKUSTIK.CH
 T +41 41 679 73 73
 F +41 41 679 73 79



A+ and FSC Produkte sind gekennzeichnet / A+ and FSC products are marked / Produits A+ et FSC sur demande / Prodotti A+ e FSC sono contrassegnati