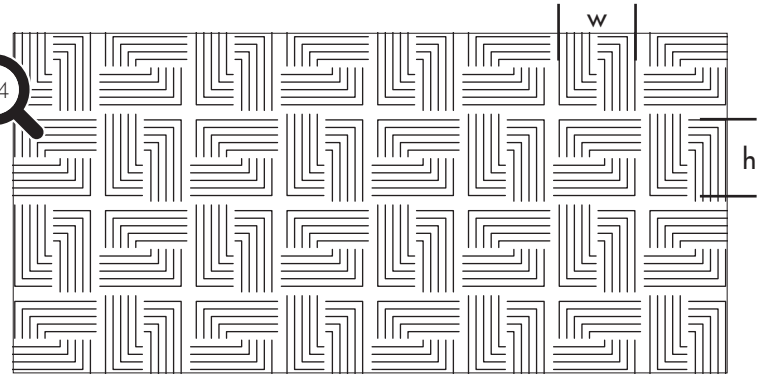
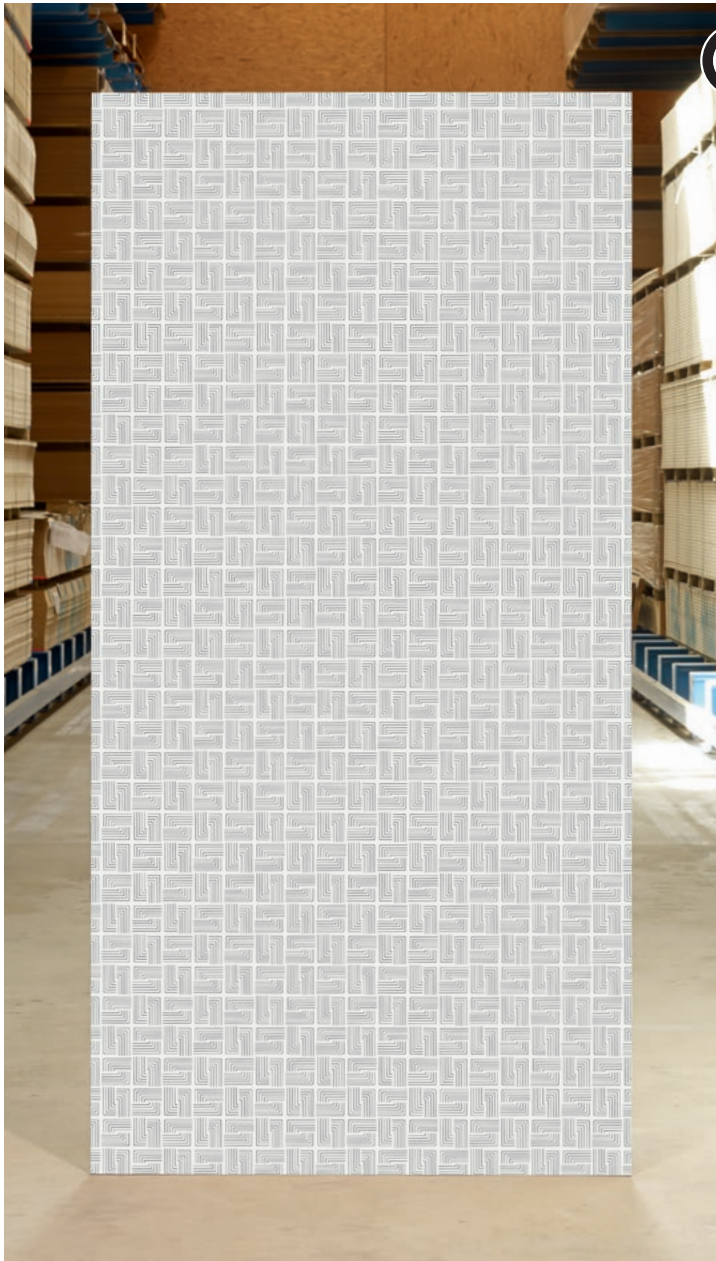


TOP(A)K(U)S(T)I(K)[®] Line 2119



Repeated Pattern w = 96 mm
h = 96 mm

Sound absorption data acc. to ISO 354




Suspension height 226 and 66 mm
with acoustic fleece and Mineral wool 40 mm (60 kg/m³)

We have measured six of the pattern in an acoustic chamber according to ISO 354. For the other pattern, the absorption value can be taken that has a similar open area. Have a look at the table for these values*.

Line	%	226 mm	66 mm	226 mm	66 mm
2111	2.1	0.50 LM	0.50 LM	0.80 L	0.75 LM
2117	2.8	*	*		
2122	3.2	*	*		
2112	3.3	0.60 LM	0.60 LM		
2118	3.7	*	*		
2110	4.0	0.70 L	0.70 LM		
2123	4.0	*	*		
2125	4.2	*	*		
2121	5.1	0.70 L	0.65 LM		
2116	5.2	*	*		
2115	5.8	0.75 L	0.75 M		
2124	7.1	*	*		
2120	8.0	0.70 L	0.70 LM		
2119	8.7	*	*		
2114	8.9	*	*		
2113	14.8	0.75	0.75		

TOPAKUSTIK[®] Line Plus: Micro-perforation can be added to the complete surface of each of the 16 pattern. This increases the sound absorption values to those for our product TOPPERFO[®] Micro.

SURFACES

-  **Wood Veneer**
all types of wood veneer
(light veneers must be sampled)
-  **Paint**
all except white and very light colours
(after consultation)
-  **Melamine**
our eco-Collection 2.0 (only with MDF)
HPL coating on request

CORE MATERIAL

- MDF 16 mm standard D-s2,d0 and fire retardant B-s1,d0
- RESAP[®] 16 mm (without melamine)
- 3-layer White Fir 16 mm

FORMATS

- max. 4000 x 1280 mm
- Panel dimensions are dependant on the repeated design in horizontal and vertical direction.

NH AKUSTIK + DESIGN AG
OBSEESTRASSE 11
6078 LUNGERN
CHE-101.964.094 MWST

CONTACT@TOPAKUSTIK.CH
WWW.TOPAKUSTIK.CH
T +41 41 679 73 73
F +41 41 679 73 79



A+ and FSC Produkte sind gekennzeichnet / A+ and FSC products are marked / Produits A+ et FSC sur demande / Prodotti A+ e FSC sono contrassegnati