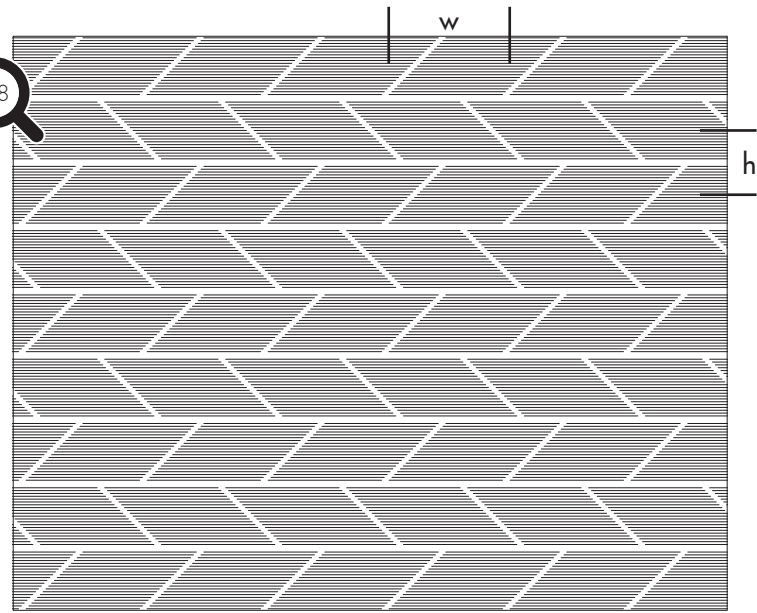


TOP(A)K(U)S(T)I(K)[®] Line 2120

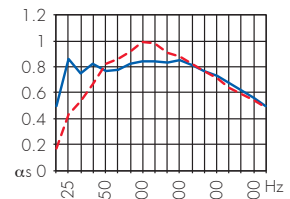


Repeated Pattern w = 128 mm
h = 136 mm

Sound absorption data acc. to ISO 354
Suspension height 226 and 66 mm
with acoustic fleece and Mineral wool 40 mm (60 kg/m³)

Line 2120

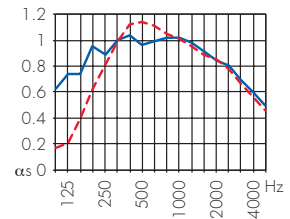
α_w	Euro	NRC
0.70 (L)	C	0.80
0.70 (LM)	C	0.85



2/2/0.5

with additional micro-perforation

α_w	Euro	NRC
0.80 (L)	B	0.93
0.75 (LM)	C	0.95



SURFACES

- Wood Veneer**
all types of wood veneer
(light veneers must be sampled)
- Paint**
all except white and very light colours
(after consultation)
- Melamine**
our eco-Collection 2.0 (only with MDF)
HPL coating on request

CORE MATERIAL

- MDF 16 mm standard D-s2,d0 and fire retardant B-s1,d0
- RESAP[®] 16 mm (without melamine)
- 3-layer White Fir 16 mm

FORMATS

- max. 4000 x 1280 mm
- Panel dimensions are dependant on the repeated design in horizontal and vertical direction.